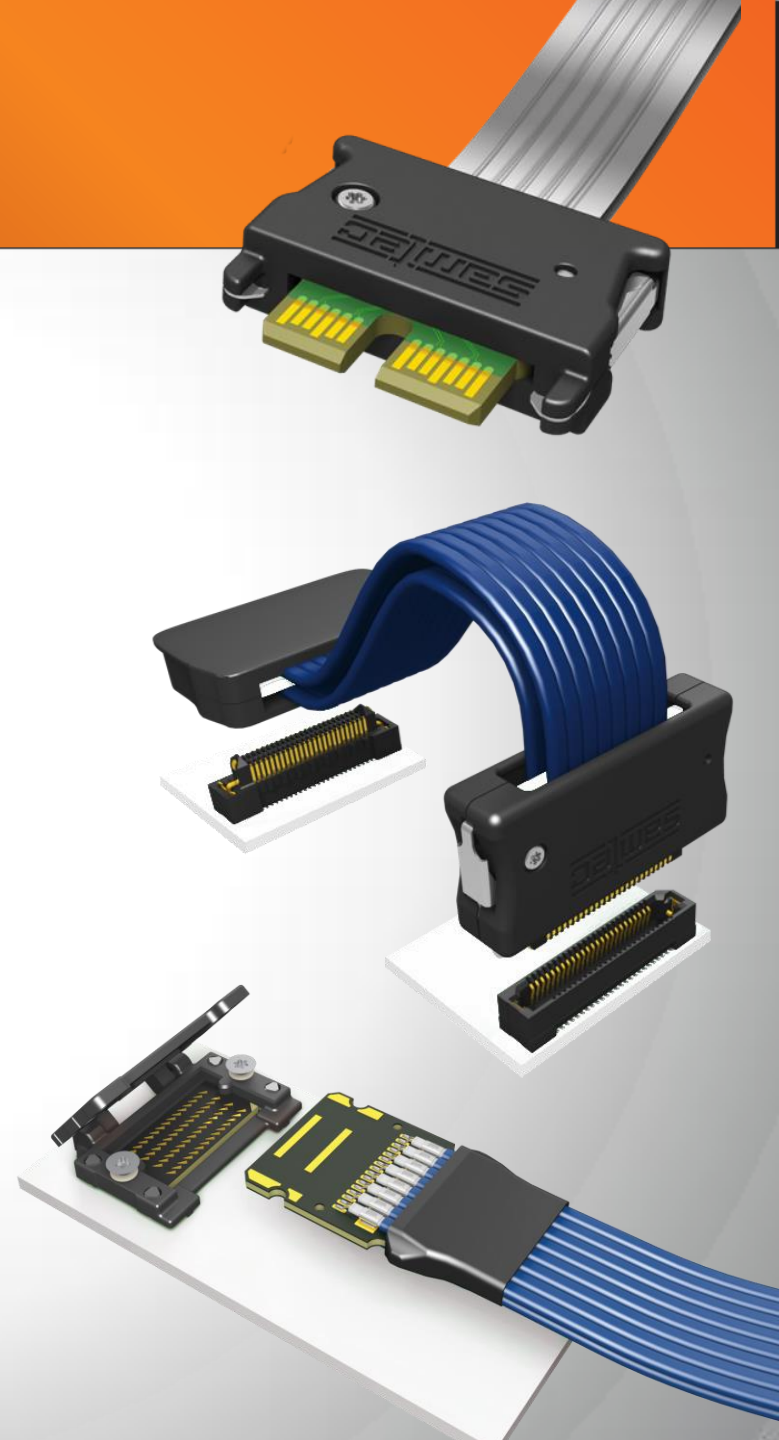


# TWINAX

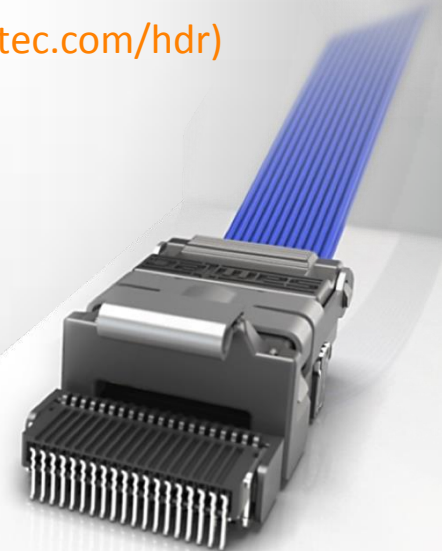
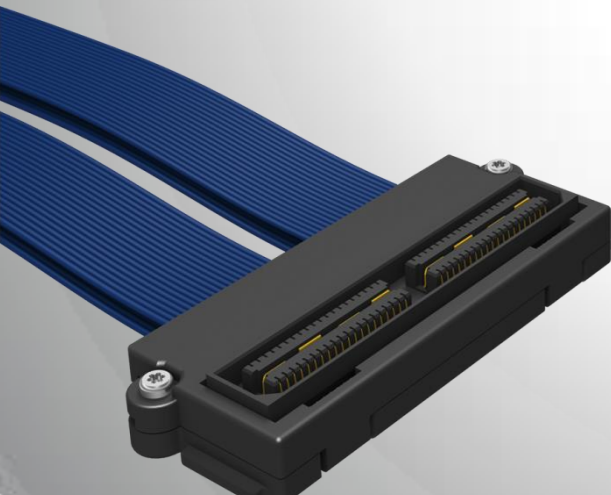
- Performance to 23 Gbps
- Inside-the-box Eye Speed<sup>®</sup> or AcceleRate<sup>™</sup> high speed copper cables
- Differential 85  $\Omega$  or 100  $\Omega$
- 30 and 32 AWG
- 0.50 mm to 2 mm pitch
- Meets a variety of protocols, including: SAS, SATA, Fibre Channel, PCIe<sup>®</sup>, Ethernet and InfiniBand<sup>™</sup>
- Easily mix-and-match end options with extensive customizing capabilities and ruggedizing features
- Solutionator<sup>®</sup> - identify your mated set in less than a minute ([www.samtec.com/hdr](http://www.samtec.com/hdr))



# MICRO COAX

- Performance to 28 Gbps
- Inside-the-box Eye Speed<sup>®</sup> high speed copper cables
- 38, 36, 34, or 32 AWG
- Single-ended 50  $\Omega$
- 0.50 mm to 1.27 mm pitch
- Meets a variety of protocols, including: SAS, SATA, Fiber Channel, PCIe<sup>®</sup>, Ethernet and InfiniBand<sup>™</sup>
- Easily mix-and-match end options with extensive customizing capabilities and ruggedizing features
- Solutionator<sup>®</sup> - identify your mated set in less than a minute ([www.samtec.com/hdr](http://www.samtec.com/hdr))

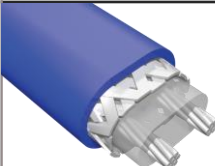
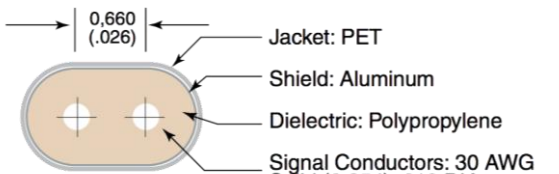

28<sup>+</sup>  
Gbps



# CABLE TYPES

Inside-the-box differential high speed copper cables:

- **Twinax**

Eye Speed <sup>®</sup> Cable	AcceleRate <sup>™</sup> Cable
Ideal for small bend radii and dynamic high flexing cycle applications	Ideal for reduced cost and static applications with a one-time cable crease for corner-routing and space limitations
 <p data-bbox="405 928 927 1113">0,64 (.025)</p> <ul data-bbox="656 956 927 1113" style="list-style-type: none"><li>Jacket: PVC 1,65 (.065) x 1,14 (.045)</li><li>Shield: Copper Foil</li><li>Dielectric: FEP</li><li>Signal Conductors: 32 AWG Stranded 0,25 (.0010) DIA</li></ul> <hr data-bbox="405 1135 956 1142"/> <p data-bbox="405 1149 956 1242">Capacitance: 45.2 pF/meter (nominal) Skew: 10 ps/m within pairs Propagation Delay: 1.46 nS/foot (4,79 nS/meter)</p>	 <p data-bbox="1023 928 1178 971">0,660 (.026)</p> <ul data-bbox="1275 942 1564 1113" style="list-style-type: none"><li>Jacket: PET</li><li>Shield: Aluminum</li><li>Dielectric: Polypropylene</li><li>Signal Conductors: 30 AWG Solid (0,254) .010 DIA</li></ul>  <hr data-bbox="1004 1135 1584 1142"/> <p data-bbox="1004 1149 1584 1242">Capacitance: 13.9 pF/foot (nominal) Skew: 10 ps/m within pairs Propagation Delay: 1.53 nS/foot (5,02 nS/meter)</p>

# CABLE TYPES

Inside-the-box high speed copper cables:

- **Micro coax**

## Eye Speed<sup>®</sup> Cable

Ideal for small bend radii and dynamic high flexing cycle applications

